

MARY FRANCES II



Artist's Rendering



4044 Camberley Street
Lot 1859 - 33' - Carriage
2,339 sq.ft - 3 Bedrooms - 3.5 Baths



WESTHAVEN.

WESTHAVEN REALTY | www.WESTHAVENTN.com | 615-599-1764

SOUTHERN LAND
HOMEBUILDING

MARY FRANCES II

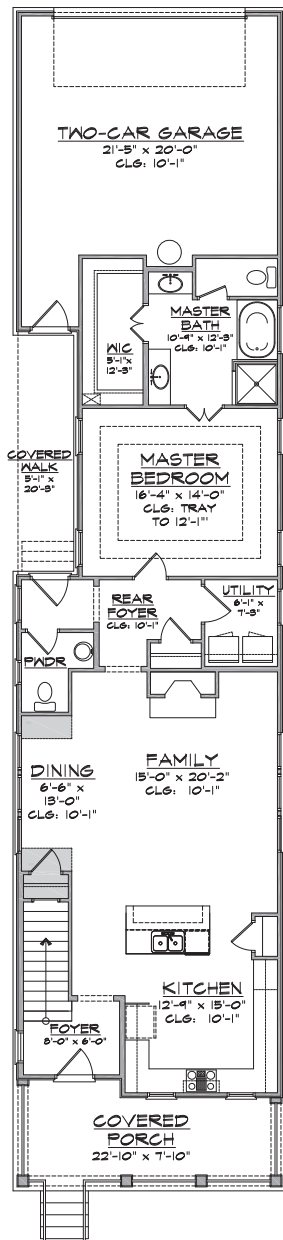
AT WESTHAVEN



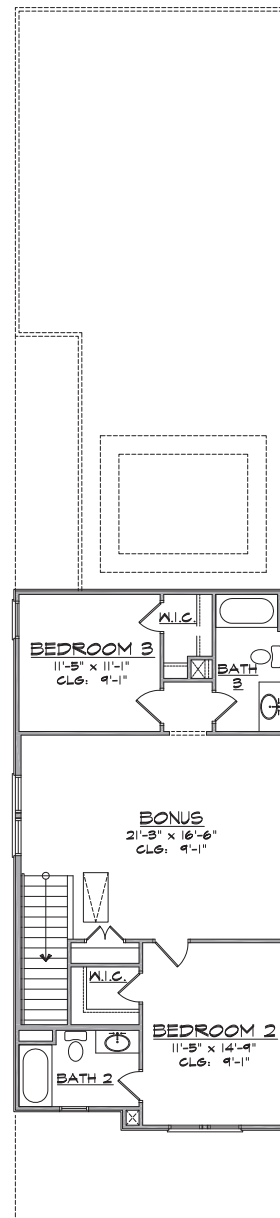
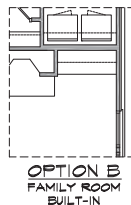
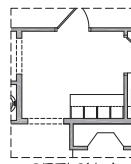
WESTHAVEN

LOT 1859 - 4044 Camberley Street

33' - Carriage | +/- 2,339 sq. ft. | 3 Bedrooms - 3.5 Bath



MAIN LEVEL FLOOR PLAN



UPPER LEVEL FLOOR PLAN



Westhaven Realty

1001 Westhaven Blvd., Suite 100 · Franklin, Tennessee 37064 · 615.599.1764 · fax 615.599.1763 · www.westhavenTN.com



The elevation and floor plans contained herein are not to scale and are graphic illustrations for marketing and presentation purposes only. Actual floor plans and all materials may vary prior to or during construction. Some features shown may be optional. The represented builder and Southern Land Company reserves the right to substitute materials and components of similar quality, and to change features, options, and architectural details without prior notice. Accordingly, neither these materials, nor any communication made or given in connection with these materials, may be deemed to constitute any representation of warranty, contract or guarantee or may otherwise be relied upon by any person or entity unless conveyed in written form.